

# Flight Tracker Consortium Meeting

December 3, 2025



[www.edgeforscholars.org](http://www.edgeforscholars.org)

[https://redcap.link/flight\\_tracker](https://redcap.link/flight_tracker)

# Meeting Agenda



Current Version:  
**v6.23.1**

## **What's New?**

Upcoming: “How I Use Flight Tracker” Corner  
Flight Tracker’s Logo Rebrand

## **Deep Dive:** Cohorts

## **What's Next?**

Educational Videos  
PubMed Publication Error: Update  
Happy Winter Holidays!



**FLIGHT  
TRACKER**  
FOR SCHOLARS

# What's New?

# “How I Use Flight Tracker” Corner



- Project pivot: Greatest current need is **software education**
- A great way to educate is to teach each other
- I'm interested in how you're using Flight Tracker
- Creating a **corner** on calls about “How I Use Flight Tracker”
- There are many ways to use Flight Tracker, and none is the only/best way to use it
- **Volunteers for coming months?**  
The odder the use case, the better!



# Flight Tracker's Logo Rebrand



- We're adjusting the Flight Tracker logo, font & colors to fit with other Edge for Scholars products
- We'll gradually modify the look-and-feel of Flight Tracker
  - Updated fonts, color palette & logo



**FLIGHT  
TRACKER**  
FOR SCHOLARS



**FLIGHT  
TRACKER**  
FOR SCHOLARS

# Deep Dive

## Cohorts

# Overview

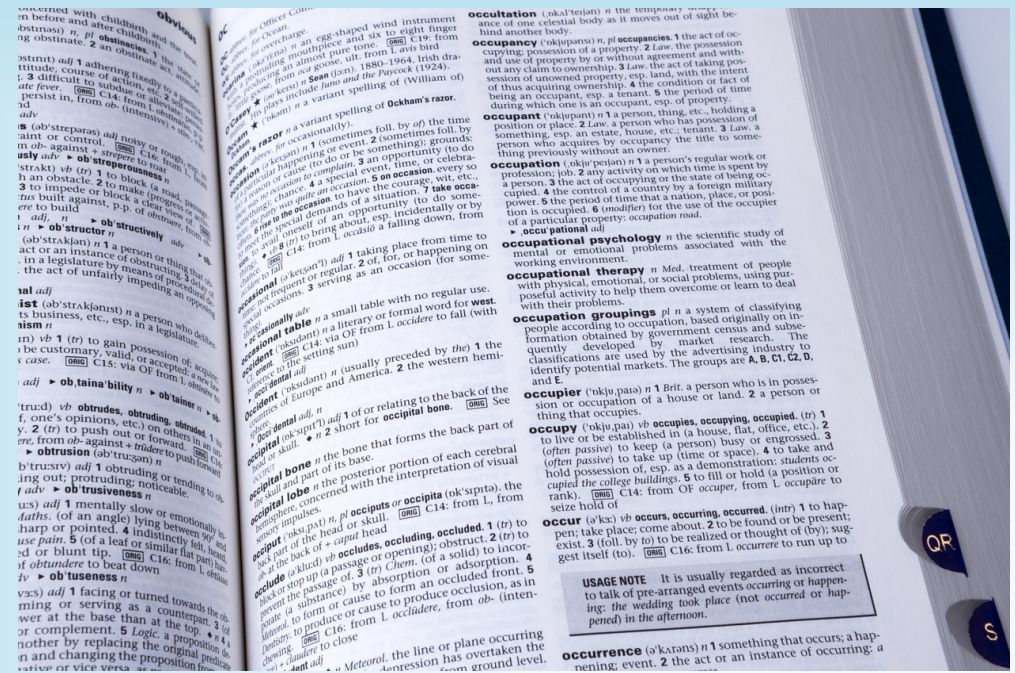
- Adding a Cohort by Traits
  - Person & Program Roles
  - Tips & Tricks
- Hand-Picking a Cohort
- Viewing Cohorts
- Using Cohorts
- Editing Cohorts Later
- Deleting or Renaming a Cohort
- Cohort Projects
- REDCap Reports





# Definition

- For Flight Tracker purposes, a cohort is a sub-group of scholars defined by certain characteristics
- E.g., class of 2024, class of 2023, faculty, staff, students, mentors, MDs, PhDs, women, men, grant recipients

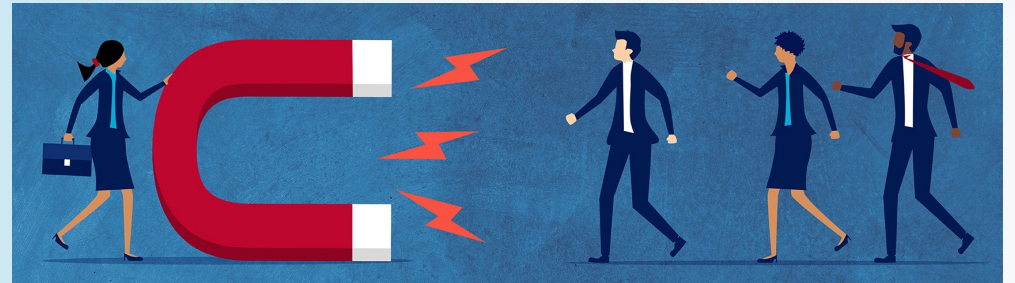




# Use Case: A Story



- Recently, we were asked who we should be recruiting to succeed at Vanderbilt... **What do the data say?**
- We compared how our MD-only's were performing vs. MD-PhDs and vs. PhDs
- We made a cohort to view statistics of each
- Then we made a table to compile key statistics
- We presented the data to department chairs who were interested in who we should recruit to strategically succeed



# Adding a Cohort by Traits



- “Add/Modify a Cohort” page

## Add a Cohort


This page is complex. [Click here to show help.](#)

Title:

Precedence Rules: XOR > AND > OR

	Filter Type	Variable		Value	
Filter 1	Demographic ▾	Academic Degrees ▾	Has ▾	MD only	Add Row
			OR ▾		
Filter 2	Demographic ▾	Academic Degrees ▾	Has ▾	MD + other	Add Row
					Commit Filter

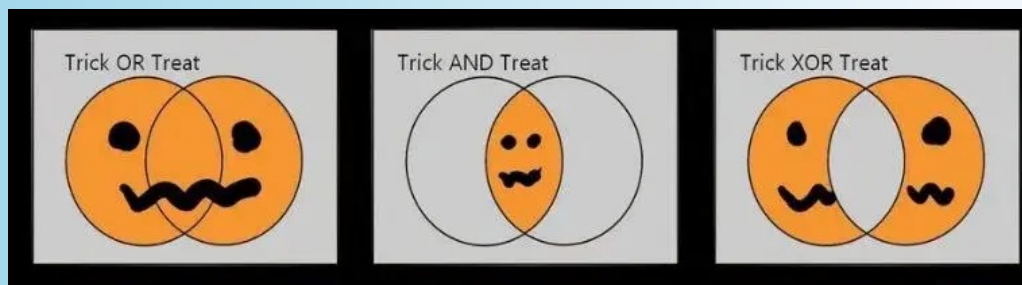
# Adding a Cohort by Traits: Options

- Demographics
  - Grants
  - Publications
  - Resources
- 
- Lots of variables available under each
    - Dropdowns: Has or does not have
    - Dates: On, Before, After
    - Email domain: Has, does not have, contains
  - Can combine multiple variables



# Adding a Cohort by Traits: Combinations

- Combine rows via Boolean logic: AND, OR, or XOR
  - Google provides a lot of training on Boolean logic
- Precedence:
  - XOR = Exclusive OR = only one can be true
  - AND = both must be true
  - OR = at least one must be true



# Person & Program Roles



- Sometimes, you want to make a cohort based on a trait that Flight Tracker does not provide...

**Solution:** Person & Program Roles provide ways to track people with customized traits

**You configure the options/labels for these fields**

- Person Roles are dropdowns: select only one
  - You can make up to **SIX** Person Roles
- Program Roles are checkboxes: able to select more than one
  - As a multiselect, only **ONE** Program Role field is needed

# Person & Program Roles



- In the General menu → Configure Application page [or the cog in the upper-right], you can set up a Person or Program Role
- Fill in data on the **Identifiers** form in REDCap
- If you do so, you can create a custom cohort based on the role
- *E.g.*, class of 2024, class of 2025, faculty, student, mentor, leader & other project-specific needs

Options for **Person Role #1 (Dropdown)** on the **Identifiers** form. These will be made into a dropdown.

This custom field allows for you to specify a role for your trainee within the program. This can be used to form cohorts / filters.

(One per line. Optional. When filled in, it will create an extra field in your project once you update your Data Dictionary on Flight Tracker's Home page.)

# Cohort Design: Tips & Tricks



- Use email domain as a proxy to tell whether they're at your institution
- Start/End of Training Program refers to the field on the Identifiers form
- Whether someone received a certain grant can be powerful
- Remember: All ANDs are processed before ORs!





# Hand-Picking a Cohort



- “Hand-Pick a Cohort” page
- Allows you to pick individuals instead of picking a trait
- Alphabetical order
- Check a name to include in the cohort

## Hand-Pick a Cohort

Cohort Name:

- ☐ 1: [Khaled A Abdel-Kader](#)
- ☐ 2: [Ty W Abel](#)
- ☐ 3: [Robert L Abraham](#)
- ☐ 365: [Aaron W Aday](#)
- ☐ 513: [Fatemeh Adelnia](#)
- ☐ 456: [Rajiv Agarwal](#)
- ☐ 493: [Vineet Agrawal](#)
- ☐ 335: [Aimalohi A Ahonkhai](#)
- ☐ 480: [Kimberly Albert](#)
- ☐ 4: [Melinda C Aldrich](#)
- ☐ 452: [Matthew R Alexander](#)
- ☐ 443: [Ryan Allen](#)
- ☐ 578: [Kaushik Amancherla](#)

Cohorts / Filters	Mer
Add/Modify a Cohort	
View Existing Cohorts	
Manage Cohorts	
Cohort Outcomes	
Export a Cohort	
View Cohort Metrics	
Hand-Pick a Cohort	

# Viewing Cohorts



Cohort: All Current MDs					
Combiner	Type	Variable	Choice	Comparison	Value
	Demographic	Academic Degrees	MD only	Has	
AND	Demographic	Email Domain	vumc.org	=	
OR	Demographic	Academic Degrees	MD + PhD	Has	
AND	Demographic	Email Domain	vumc.org	=	
OR	Demographic	Academic Degrees	MD + other	Has	
AND	Demographic	Email Domain	vumc.org	=	
Size of Cohort All Current MDs: 249 Scholars					
<div>Show Names</div> <div>Export Names</div>					



- Open the “View Existing Cohorts” page
- Show Names
- Export Names to a Text document

# Using Cohorts



- Cohorts are on every Flight Tracker page for data analysis
- Changing a cohort will limit the data analysis to only that subgroup of records in the cohort
  - It's as if the remaining scholars didn't exist
- Cohorts are NOT on REDCap pages [more in four slides...]

Cohort: ---SELECT---



# Editing Cohorts Later



- Open the page to “Add/Modify a Cohort” or “Hand-Pick a Cohort”
- Select the prior cohort
- Modify the logic or the checkboxes
- Click save



# Deleting/Renaming a Cohort



	Cohort Size	Delete	Rename	Make Cohort Project
Last CDA >= 2015	306 Scholars	<input checked="" type="checkbox"/>	<input type="button" value="Rename"/>	<input type="text" value="API Key with Import/Export Rights"/>
Last CDA >= 2018	238 Scholars	<input checked="" type="checkbox"/>	<input type="button" value="Rename"/>	<input type="text" value="API Key with Import/Export Rights"/>
NCI	56 Scholars	<input checked="" type="checkbox"/>	<input type="button" value="Rename"/>	<input type="text" value="API Key with Import/Export Rights"/>
Female URMs	61 Scholars	<input checked="" type="checkbox"/>	<input type="button" value="Rename"/>	<input type="text" value="API Key with Import/Export Rights"/>
Active Ks	108 Scholars	<input checked="" type="checkbox"/>	<input type="button" value="Rename"/>	<input type="text" value="API Key with Import/Export Rights"/>
Current Newman	108 Scholars	<input checked="" type="checkbox"/>	<input type="button" value="Rename"/>	<input type="text" value="API Key with Import/Export Rights"/>

- Open the “Manage Cohorts” page
- The red **X** will delete the cohort
- Rename will re-title the cohort
- The API Key will create a Cohort Project [more on next slide]



# Advanced: Cohort Projects



- A Cohort Project is a separate, **read-only** Flight Tracker project that contains records from only one cohort
- Flight Tracker copies a cohort's data once per week [Mondays]
- Helpful to subdivide a project so that sub-group leaders can view their data without viewing others'
- Being read-only, cohort projects do NOT need to do wrangling
- *E.g.*, the Vanderbilt Newman Society administrates several K12s, and we provide leaders with access to their own data
- *E.g.*, the Dept. of Medicine wants divisions to see their own data

## Limitation: REDCap Reports



- The one place cohorts will NOT work is in REDCap Reports
- **Workaround:** You can create your own logic in the Filter in Step 3, especially using the summary instrument
  - *E.g.*, use summary\_degrees to filter for MDs





# Recap



- Adding a Cohort by Traits
  - Person & Program Roles
  - Tips & Tricks
- Hand-Picking a Cohort
- Viewing Cohorts
- Using Cohorts
- Editing Cohorts Later
- Deleting or Renaming a Cohort
- Cohort Projects
- REDCap Reports



# Feedback



**What went well? What more do you want to know?**





**FLIGHT  
TRACKER**  
FOR SCHOLARS

# What's Next?

# Educational Videos



- [https://redcap.link/flight\\_tracker\\_ed](https://redcap.link/flight_tracker_ed)
- Transcripts for:
  - Steps to Get Started
  - NIH Training tables
  - Scholar Portal Administration
  - Using Your Flight Tracker Profile on the Scholar Portal
  - Mentee-Mentor Agreements [**video up now!**]
- Cohorts coming next!
- As soon as rebranding happens, I aim to add videos for each of these topics
- **Are there other topics you need?** Let me know. I'm happy to prioritize your needs.



# PubMed Data Pull Error: Update



- Flight Tracker Error: “Searching PubMed for [name] returned 9999 PMIDs...” on Tuesdays
- First occurred in October, during the government shutdown
- Andrew & I think we’ve untangled the problem & found a solution
- The fix will be out in **v6.23.2**, within the next week

The PubMed.gov logo, featuring the text "PubMed.gov" in white. The "M" is stylized with a white book icon integrated into its left side. The background is a dark blue rectangle with a subtle pattern of light blue dots and lines, resembling a molecular or network structure.



# Happy Winter Holidays!



I'll send out invites for 2026 Flight Tracker meetings soon...



# Support Resources



## Forum: Flight Tracker Community

Free accounts available

## Monthly Troubleshooting Call

3<sup>rd</sup> Wednesday, December 17, 1pm CT

## Monthly “Newbie” Call

Wednesday, December 10, 12.30pm CT

## Monthly Getting Started Workshop

Friday, December 12, noon CT

Type your email in the chat for more info





# Flight Tracker Consortium Meeting

December 3, 2025



[www.edgeforscholars.org](http://www.edgeforscholars.org)

[https://redcap.link/flight\\_tracker](https://redcap.link/flight_tracker)