

Flight Tracker Consortium Meeting

October 1, 2025



www.edgeforscholars.org

https://redcap.link/flight_tracker

Meeting Agenda



Current Version:
v6.22.0

What's New?

Mentee-Mentor Agreements: Custom Questions
Mentoring Agreement Partners

Deep Dive: Kaplan-Meier Success Curves

What's Next?

Small Bug Requests on Hold



What's New?

Custom Mentoring Agreements



- The most-requested feature for mentoring agreements is to add custom questions
- Now, **admins** and **mentors** can add up-to-five questions ahead of time
- [Live Demo](#)

Custom Questions

If You'd like to configure some custom questions that appear on all mentor/mentee agreements you can add them here.

How many custom questions would you like to ask your mentees?

Question 1 Response Type

Question Title

Question 2 Response Type

Question Title

Number Of Choices

Choice 1 Text

Choice 2 Text

Mentoring Agreement Partners



- Do you want to use the mentee-mentor agreements?
- If so, we are looking for partners on a **study** to correlate mentorship practices to productivity metrics
 - Goal: Find evidence-based best practices of mentorship
- We have data at Vanderbilt, but not enough to meet our needs for the study's power
- **If interested, please let me know your email in the chat!**



Deep Dive

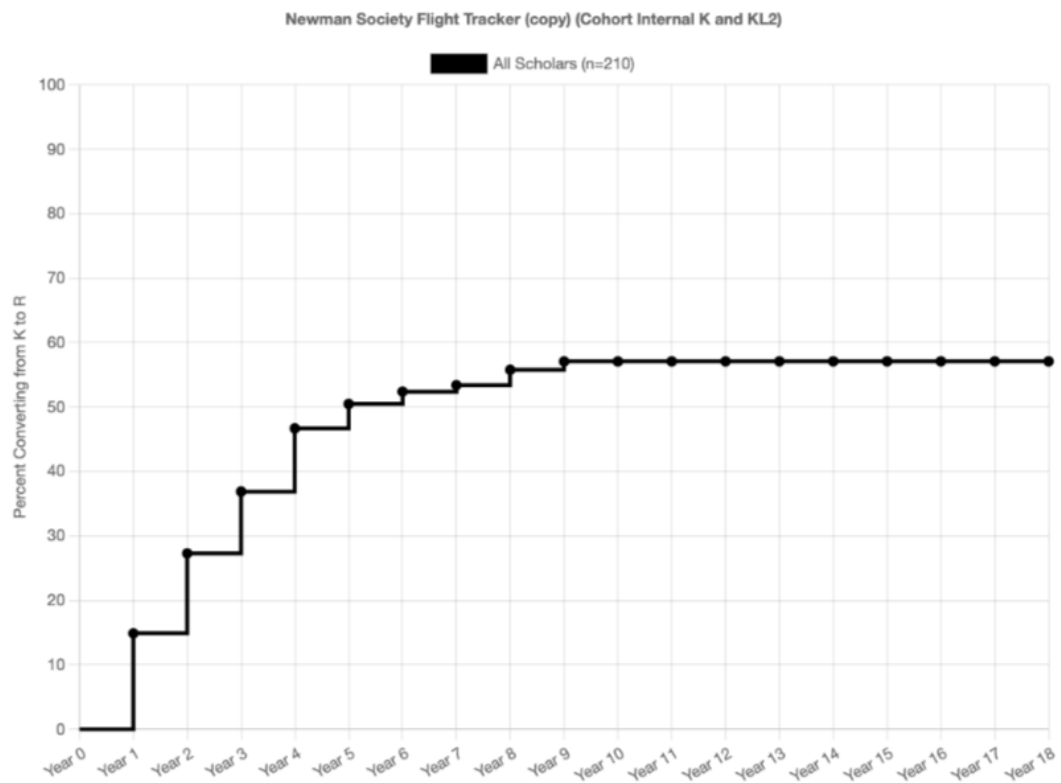
Kaplan-Meier Success Curves

Kaplan-Meier Success Curve



General Grants Pubs View

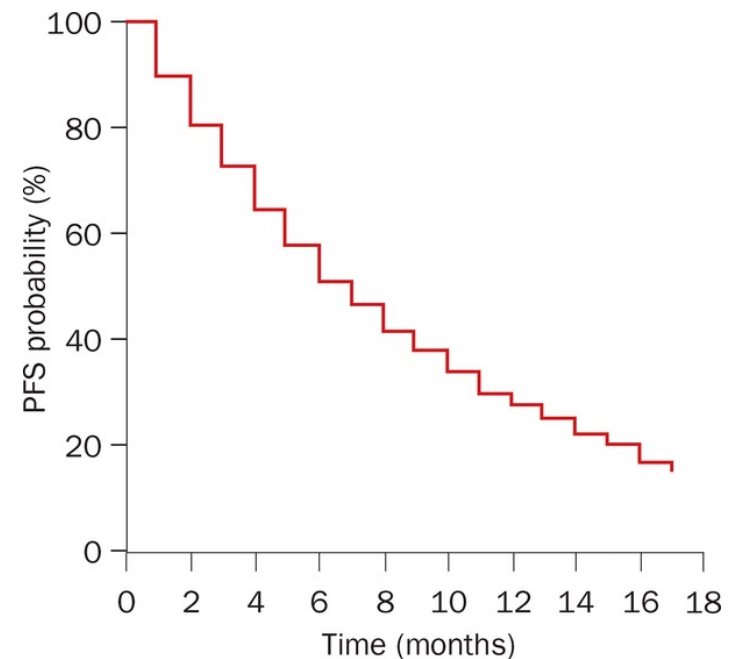
- NIH Reporting Table 1
- NIH Reporting Tables 2-4
- NIH Reporting Tables 5 & 8
- Upload Prior NIH Reporting Tables
- List of Scholar Names
- Conversion Calculator
- Kaplan-Meier Conversion Success Curve**
- Configure Application
- Configure Summaries
- Batch Queues
- Logging
- Custom Programming
- Test Connectivity
- Copy Project to Another Server



Outline



- How to read the plot
- Configuration:
 - Defining “censored” and giving up
 - $T \rightarrow K$ or $K \rightarrow R$
 - Resources option
- Statistics:
 - Survival analysis
 - Hazard ratios & plots
 - Comparing K-M curves
- Importing data into stats packages



A concise introduction to Kaplan-Meier plots exists at [PMC7457144](#). Several images have been used from this resource.

Reading the Plot



Line represents the percent of people:

- who have converted
- AND who are still “active in research”

Similar to, but slightly different from, $T \rightarrow K$ and $K \rightarrow R$ conversion ratios

Advantages to Kaplan-Meier



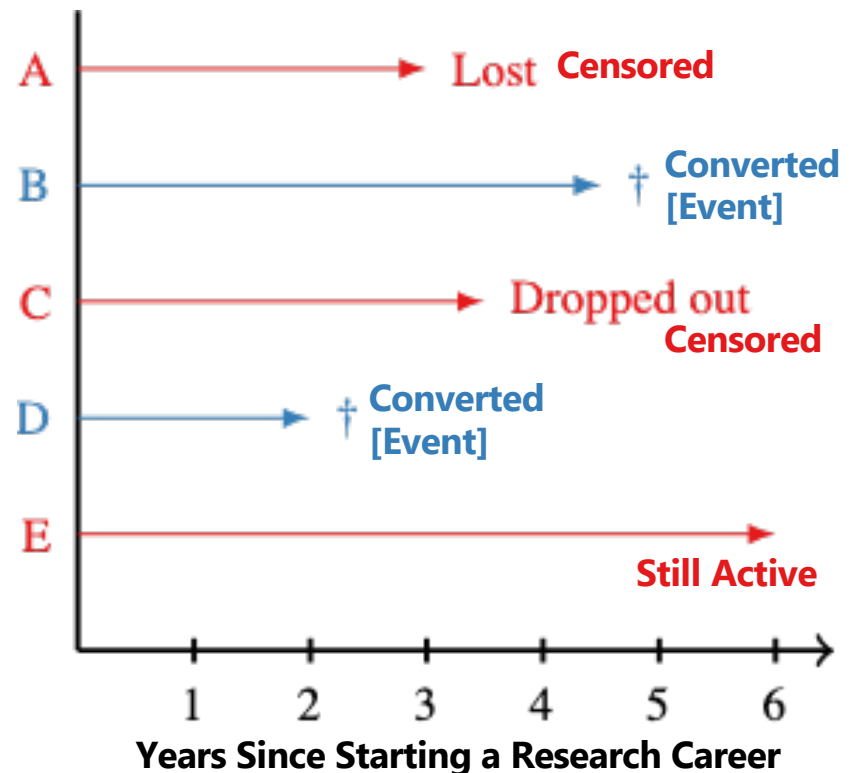
- A traditional line graph can show a conversion ratio over time
 - Penalty when people fall out of a research career
- Instead, a Kaplan-Meier plot:
 - Shows the successes of people still active in research
 - No penalty for past failures
 - Emphasis on present-day opportunities



"Censoring" & "Events"



- For us, censoring happens when someone stops being “active in research”
 - Lost to follow-up
 - No new papers or grants
- An “event” happens when someone converts from $T \rightarrow K$ or $K \rightarrow R$
 - “Time-to-event” analysis
- If no event and they don’t drop out, then they’re active



Configuration Options



- **Test for Continued Activity**
 - Publishing Publications
 - Receiving Grant Awards
 - Either Pub –or– Grant Activity
- **Start Date** [Year 0]
 - End of Last Training Grant
 - Either First Grant –or– Pub Activity
 - First Grant Activity
 - First Pub Activity

A screenshot of the FLIGHT TRACKER configuration interface. It shows a form with several dropdown menus and a checkbox. The "Measurement Granularity" dropdown is set to "years". The "Test for Continued Activity" dropdown is set to "Publishing Publications". The "Show All Resources" checkbox is checked. The "Start Date" dropdown is set to "End of Last Training Grant". A "Re-Configure" button is located at the bottom of the form.

Measurement Granularity: years ▾

Test for Continued Activity: Publishing Publications ▾

☒ Show All Resources

Start Date: End of Last Training Grant ▾

Re-Configure

Configuration Options



- **T→K**

- How? Sign up people to a training grant with a Custom Grant

- **K→R**

- How? Sign people up for internal Ks or K12/KL2s via a Custom Grant
- NIH & VA CDAs are automatically downloaded

On a Scholar's
Record, add a
Custom Grant

Initial Survey (survey)	
Custom Grant	
Reporter	
Followup (survey)	
Exporter	
Citation	

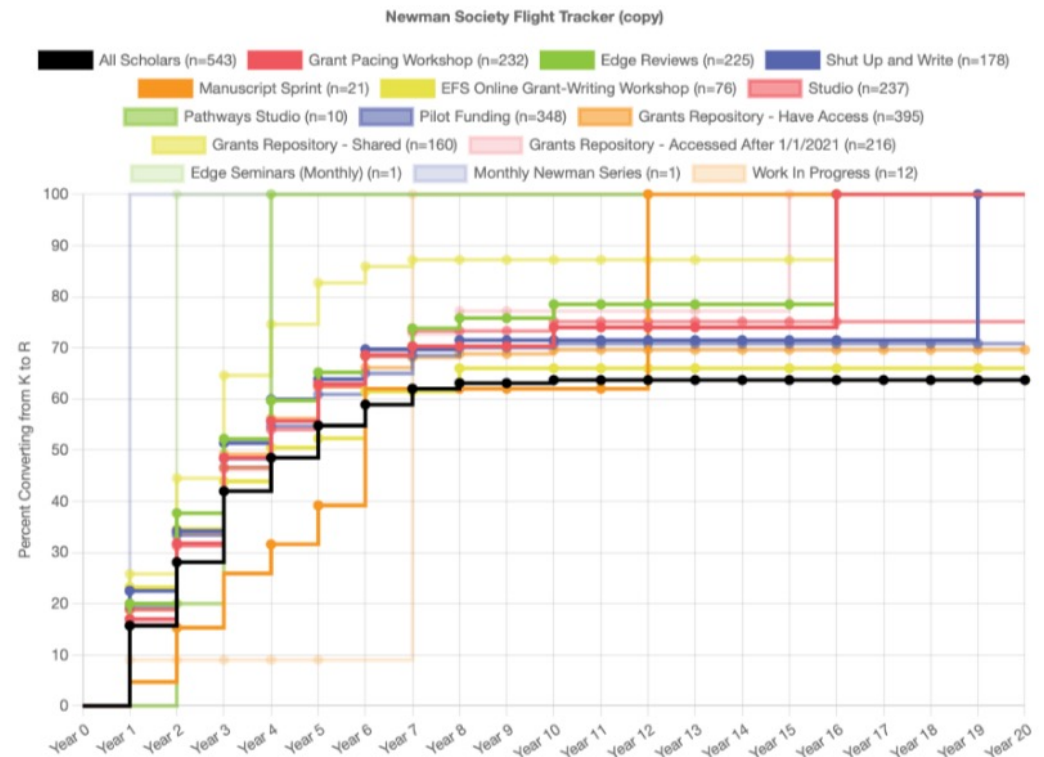


Configuration Options



- **Resources**

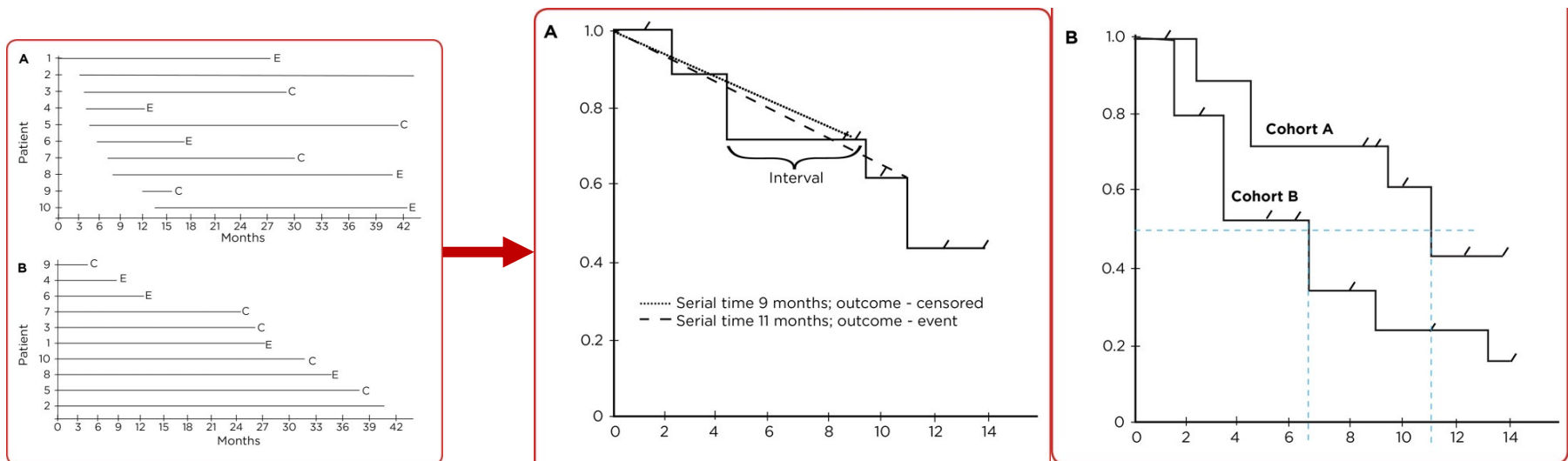
- Does using a career-development resource increase the chances of success?
- If so, colored lines should be generally above the black line



Statistics of Survival Analysis



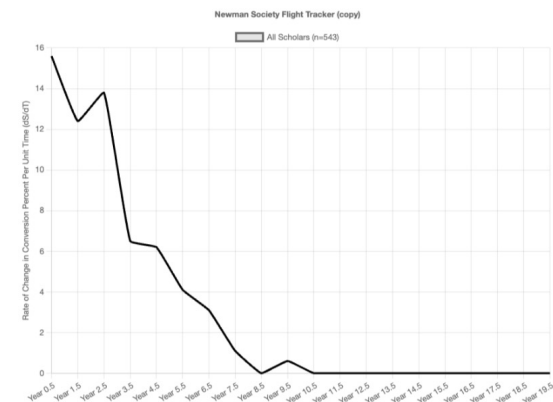
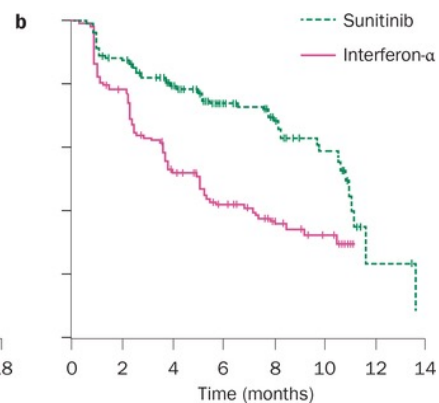
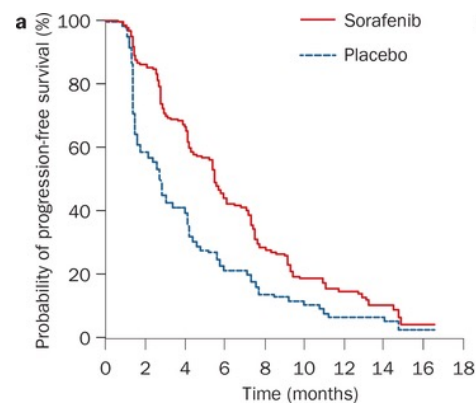
- History: Cancer plots in late 1950s
- “Time to event” – how long does someone survive?



Statistics of Hazard Ratios & Plots



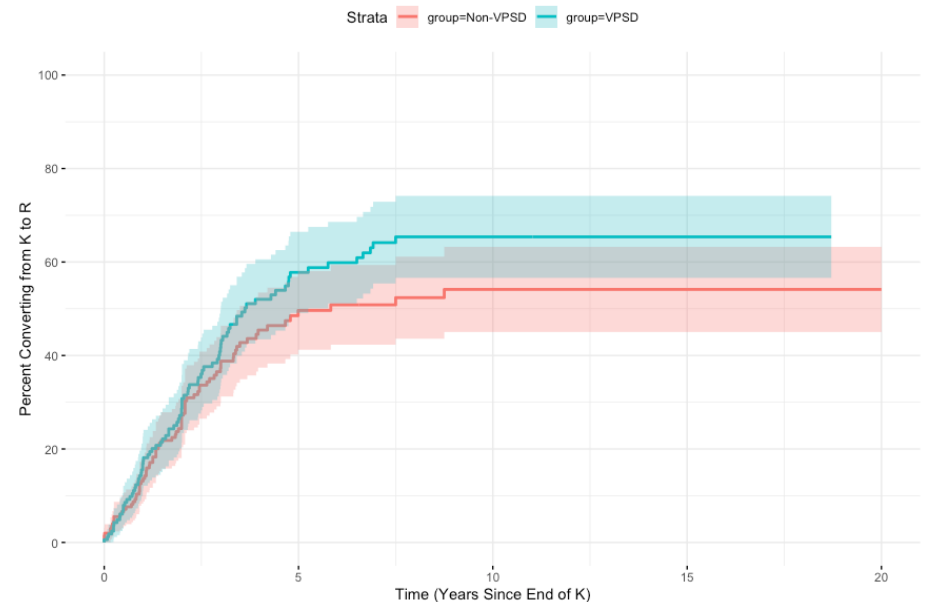
- When is the “hazard” the worst? In other words, when do people die the most?
- Likelihood that the event will happen at a point in time
 - Calculus: First derivative of K-M curve
- For us, it's the likelihood that a person will convert to next stage



Comparing Kaplan-Meier Curves



- You can compare plots for statistical overlap [but not in Flight Tracker]: Confidence intervals & p values
- K-M plots are a part of major statistics packages
 - You can export your data for further manipulation
 - Many books are published on the subject



Import Data into Stats Packages



- If desired, a statistician can produce more detailed K-M analyses
- Data are at the bottom of Flight Tracker's page
 - You can copy/paste them into a CSV to manipulate & import

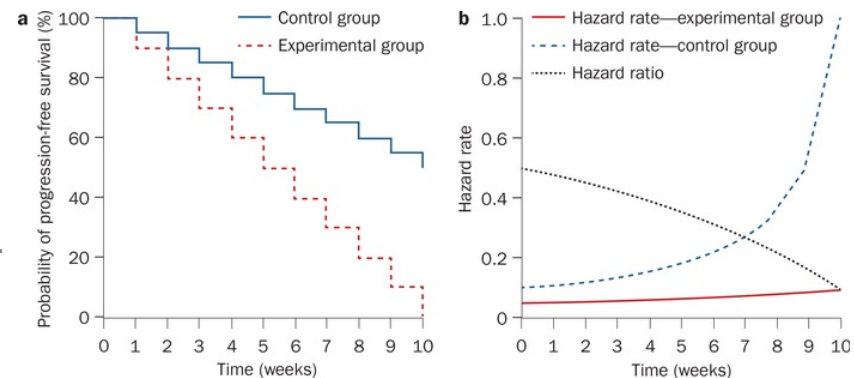
16 (Julie A Bastarache)	4.24	event
17 (Gerasimos Bastas)	3.66	censored
18 (Jason R Becker)	0.91	event
19 (Alicia C Beeghly-Fadiel)	0.91	event
20 (Susan P Bell)	6.07	censored
21 (John T Benjamin)	0.75	event
22 (Margaret (Meg) M Benningfield)	9.93	censored
23 (Gautam (Jay) B Bhawe)	0.20	event

Recap



- How to read the plot
- Configuration:
 - Defining “censored” and giving up
 - $T \rightarrow K$ or $K \rightarrow R$
 - Resources option
- Statistics:
 - Survival analysis
 - Hazard ratios & plots
 - Comparing K-M curves
- Importing data into stats packages

A concise introduction to Kaplan-Meier plots exists at [PMC7457144](#). Several images have been used from this resource.





What's Next?

Small Bug Requests



- Our new developer Ryan Moore is learning about Flight Tracker while working through a long list of bugs for our next release.



Support Resources



Forum: Flight Tracker Community

Free accounts available

Monthly Troubleshooting Call

3rd Wednesday, October 15, at 1pm CT

Monthly “Newbie” Call

Tuesday, October 14, 11.30am CT

Monthly Getting Started Workshop

Friday, October 17, 12pm CT

Type your email in the chat for more info



Flight Tracker Consortium Meeting

October 1, 2025



www.edgeforscholars.org

https://redcap.link/flight_tracker