

Flight Tracker Consortium Meeting

January 3, 2024



www.edgeforscholars.org

[X @EdgeForScholars](https://twitter.com/EdgeForScholars)

https://redcap.link/flight_tracker

Meeting Agenda



Current Version:
v6.4.0



What's New?

January: National Mentoring Month
Streamlined Mentee-Mentor Agreements
ORCID Wrangler
New Optional Fields

Deep Dive: Crowdsourcing Implementation

Office Hours with Rebecca & Scott



What's New?

National Mentoring Month



- **January** is National Mentoring Month
- You might want to consider activities with your group:
 - January 9 – **I am a Mentor Day**
 - January 15 – **MLK Day of Service**
 - January 17 – **International Mentoring Day**
 - January 21 – **Thank Your Mentor Day**



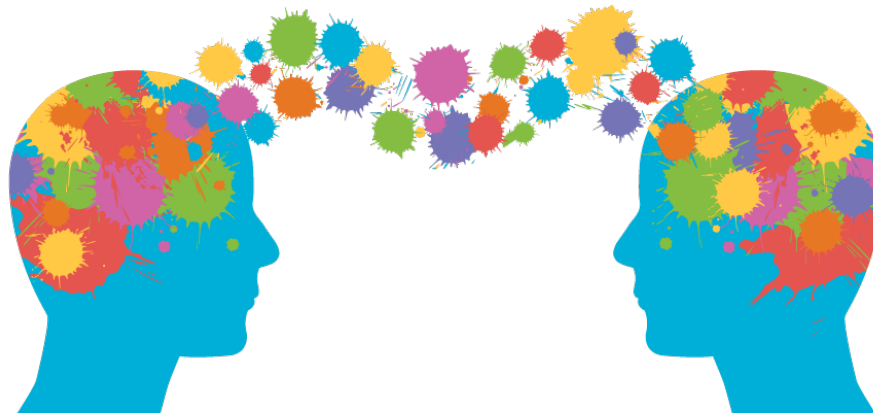
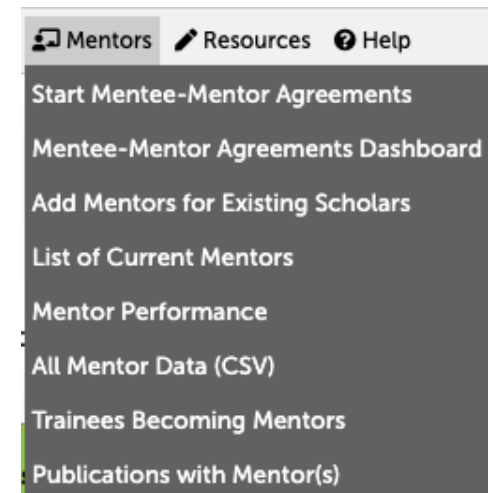
<https://www.mentoring.org/campaigns/national-mentoring-month/>

X: Follow [@EdgeForScholars](#) for mentoring content

Flight Tracker & Mentoring



- Highlights from Mentors menu
 - Mentee-Mentor Agreements [next slides]
 - Trainees Becoming Mentors
 - Publications with Mentors
- **Tremendous impact** on mentee successes



Refined Mentoring Agreements



- **v6.3.1 and v6.4.0**
- Goals:
 - Easier setup & configuration for Admins
 - Prep: Mentees configure which sections to fill out
 - Mentees fill out one section at a time



Refined Mentoring Agreements



Easier Setup & Configuration

1. Configure Agreements
2. Select & Contact Mentees
 1. Select the mentees to contact
 2. Secure the mentees' user-ids through a search
 3. Identify the mentor and the mentor's user-id
3. Monitor Progress

Step 2: Select & Contact Mentees

Mentees are the first to fill out the mentoring agreement. Then the mentor will be contacted second to fill it out with the mentee. Both mentees and mentors will need access to this REDCap system. To proceed, you will need to:

1. Select the mentee(s) to contact
2. Secure the mentee(s) user-ids through a search
3. Identify the mentor and the mentor's user-id

Restart

Mentee User-IDs

Each mentee must have a REDCap user-id to proceed. You can look up REDCap users' emails using the box on the right.

User-id for Eric D Austin:

austine

Next Sub-Step: Identify Mentors

Lookup a REDCap User ID

Please remember that some users might employ nicknames or maiden names.

First Name:

Last Name:

Look up name

Refined Mentoring Agreements



Prep: Mentees Configure Which Sections to Fill Out

WHAT CAREER STAGE ARE YOU IN?

- Predoctoral
- Postdoctoral
- Early Career Faculty

HOW FAR INTO THE MENTORSHIP ARE YOU?

- At Start
- 7-12 Months
- More than 6 Months

WOULD YOU LIKE TO MAKE AN INDIVIDUAL DEVELOPMENT PLAN (IDP)?

- Yes
- No

WHAT TOPICS WOULD YOU LIKE TO DISCUSS?

Suggested topics have been checked.

- Mentee-Mentor 1:1 Meetings
- Lab Meetings
- Communication
- Mentoring Panel
- Financial Support
- Scientific Development
- Approach to Scholarly Products
- Career and Professional Development
- Individual Development Plan

- Topics are automatically suggested based on first three answers
- Recommendations can be manually overridden by mentee

Next

Start Agreement

Refined Mentoring Agreements



Mentees Fill Out One Section at a Time

Use Prior Data:

PLEASE INDEPENDENTLY FILL OUT THE CHECKLIST BELOW. TABLES WILL APPEAR ONE PAGE AT A TIME. WHEN COMPLETE, CLICK ON THE BUTTON TO ALERT YOUR MENTOR.

[Mentee-Mentor 1:1 Meetings](#) → Lab Meetings → Communication → Mentoring Panel → Financial Support → Notify Mentor(s)

MENTEE-MENTOR 1:1 MEETINGS

At this point in your training/career, what would benefit you, the mentee, most with regards to your 1:1 meetings?

QUESTION	MENTEE RESPONSES	LATEST NOTE (CLICK FOR FULL CONVERSATION)
Frequency	<input type="radio"/> Twice a week <input type="radio"/> Weekly <input type="radio"/> Every two weeks <input type="radio"/> Monthly <input type="radio"/> Other	add note
Duration	<input type="radio"/> 30 minutes <input type="radio"/> 60 minutes <input type="radio"/> 90 minutes <input type="radio"/> 120 minutes <input type="radio"/> Other	add note

Refined Mentoring Agreements



What Hasn't Changed

- Purposes:
 - Head off potential issues early
 - Design a meaningful, engaging relationship
- 9 sections covering a head-to-toe look at mentoring
- Fills IDP requirements from NIH for pre-docs
- Produce an electronically signed final document
- Living document: Email reminders to refresh after 6-12 months



ORCID Wrangler



- ORCID IDs are unique identifiers [like SSNs] for grants & publications
- Being more secure, they skip the need for data wrangling
- Weekly ORCID sweep for IDs
- We must get the ORCID correct! → Need for an ORCID wrangler
- Thanks to Alexis Renalli [Nemours]!

ORCID

www.orcid.org



ORCID Wrangler



- Wrangle menu → ORCID Wrangler

Name	Outside Institutions in REDCap	Block All Searching?	ORCID in REDCap	ORCID on Website
8: Shanna A Arnold	Department of Veterans Affairs UT Southwestern Medical Center Sarah Cannon	Blocked <input type="button" value="turn off"/>	0000-0002-6472-939X <input type="button" value="remove"/>	0000-0002-6472-939X <input type="button" value="in REDCap"/>
9: Carolyn M Audet	LSTMH Washington University in St. Louis	No <input type="button" value="turn on"/>	0000-0002-4715-1346 <input type="button" value="remove"/>	0000-0002-4715-1346 <input type="button" value="in REDCap"/>
10: Eric D Austin	Emory University University of Colorado	Blocked <input type="button" value="turn off"/>	0009-0005-0179-2219 <input type="button" value="remove"/> 0000-0001-7742-9065 <input type="button" value="remove"/>	0009-0005-0179-2219 <input type="button" value="in REDCap"/> 0000-0001-7742-9065 <input type="button" value="in REDCap"/>
11: April L Barnado	Emory Duke MUSC	No <input type="button" value="turn on"/>	0000-0002-9573-4335 <input type="button" value="remove"/>	0000-0002-9573-4335 <input type="button" value="in REDCap"/>
12: Dan A Barocas	[none listed]	No <input type="button" value="turn on"/>		No matches!
13: Tyler W Barrett	UCLA Olive View-UCLA Emergency Medicine Residency	No <input type="button" value="turn on"/>	0000-0003-1990-7131 <input type="button" value="remove"/>	0000-0002-2984-9396 <input type="button" value="add"/> 0000-0001-8166-8704 <input type="button" value="add"/> 0000-0003-1240-0792 <input type="button" value="add"/> 0000-0002-0807-5846 <input type="button" value="add"/>
14: Robert L Barry	Harvard Harvard Medical School University of Western Ontario University of Manitoba	No <input type="button" value="turn on"/>	0000-0001-6271-9414 <input type="button" value="remove"/>	0000-0002-6435-0048 <input type="button" value="add"/> 0000-0003-2734-9475 <input type="button" value="add"/>
15: Seema Basi	Rutgers University Northwestern University Baylor College of Medicine Vanderbilt University	No <input type="button" value="turn on"/>		No matches!
16: Julie A Bastarache	[none listed]	No <input type="button" value="turn on"/>	0000-0003-0458-6507 <input type="button" value="remove"/>	0000-0003-0458-6507 <input type="button" value="in REDCap"/>

ORCID Wrangler



Name	Outside Institutions in REDCap	Block All Searching?	ORCID in REDCap	ORCID on Website
14: <u>Robert L Barry</u>	Harvard Harvard Medical School University of Western Ontario University of Manitoba	No <input type="button" value="turn on"/>	0000-0001-6271-9414 <input type="button" value="remove"/>	0000-0002-6435-0048 <input type="button" value="add"/> 0000-0003-2734-9475 <input type="button" value="add"/>

Institutions that you've added. Information for matching to right ORCID.

Block or unblock future searches for ORCID ids.

ORCID in REDCap that you're currently using. You can remove these by clicking the button. Link goes to individual's ORCID profile, which lists institutions.

ORCID on Website currently matched to this name on the ORCID website. This cell often has false positives. You can add to REDCap by clicking the button.

New Optional Fields



- Optional fields = fields where you can customize the choices
 - E.g., Faculty, Staff, Student; Class of 2024, Class of 2023, ...
 - Can be used to form cohorts



- **v6.3.1 and v6.4.0**
 - Up to 6 Person Roles
 - New optional field:
Program Roles [checkboxes]



Deep Dive

Crowdsourcing Implementation

Setting the Scene

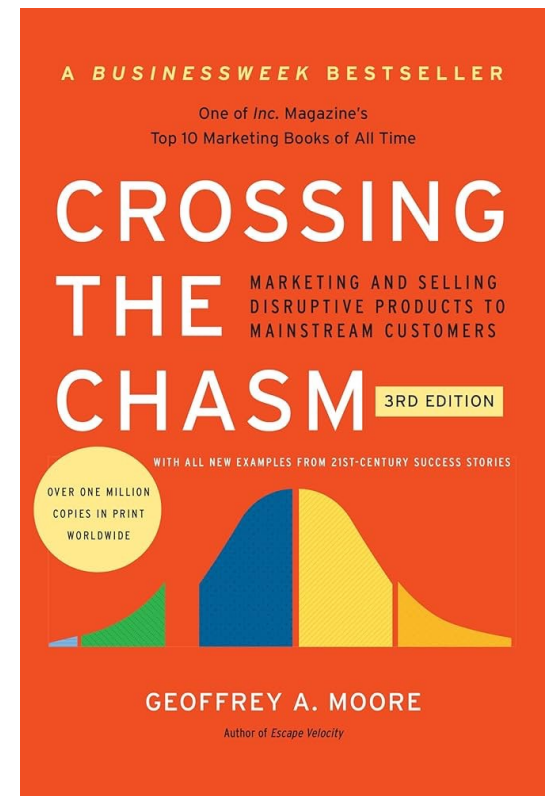
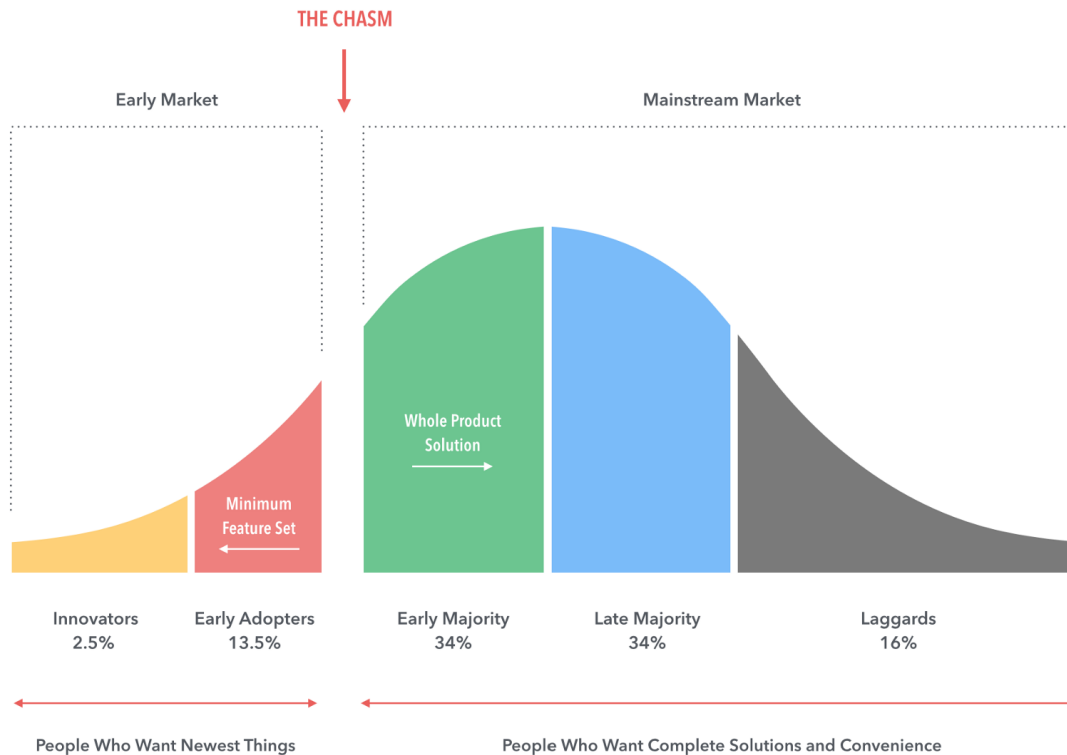


- Many institutions are starting to implement Flight Tracker institution-wide → need for guidance & collaboration
- Limits of Vanderbilt experiences [*ad hoc*]
- UT-Southwestern asked for Vanderbilt guidance, but we decided that a wider conversation would be better
- UT-Southwestern's 5 questions will serve as starting points
- **This conversation is completely open, but is recorded**



UTSouthwestern
Medical Center

Crossing the Chasm



Question #1



Has anyone rolled out Flight Tracker at an institutional level?

How did they approach this?

Did they use a staged model?



Question #2



Has anyone found a strategy for ensuring all records within projects are kept up to date from a single “core” source?



Question #3



Has anyone created “institutional project templates” within Flight Tracker to allow common institutional fields?



Question #4



Has anyone used Flight Tracker extensively for T32 table creation?



Question #5



Has anyone used Flight Tracker to look for data on individuals who have left their institution and are in longitudinal follow-up?



Flight Tracker Community



Support Forum

"Better than Email" - Ask me for an Account in the Chat

<https://redcap.vanderbilt.edu/flightracker/>

A screenshot of the Flight Tracker Community forum interface. The top navigation bar includes the logo, a search bar, a "Create post" button, and a "Spaces" dropdown. The main content area shows a list of posts under the heading "All Posts in Flight Tracker Community". Each post includes the author's name, the time since posted, the topic, and the number of comments and likes. A sidebar on the right contains the "Edge for Scholars" logo and a list of navigation links.

Welcome to Flight Tracker Community!

All Posts in Flight Tracker Community

Author	Time	Topic	Comments	Likes
jessica.chiovitte commented	1 day ago	Getting Started	5	0
Using FT for New T32 Applications	(Jump to latest comment)	new t32s		
scott.pearson commented	1 week ago	Tracking Scholars	1	0
Identical name at same institution	(Jump to latest comment)	identical names		
scott.pearson posted	1 week ago	New Features	0	0
Honors & Awards Survey		honors and awards survey		
kia.huffman commented	1 week ago	Getting Started	1	0
email not sent, make sure "Enable module on all projects by default" is NOT checked.	(Jump to latest comment)	email module setting		
scott.pearson commented	1 week ago	Wrangling Grants & Pubs	3	0
Publication results limited by the "Institutions Searched For"	(Jump to latest comment)	publication wrangler		

Edge for Scholars

- Home
- Flight Tracker Video Vault
- Mentee-Mentor Agreements
- Getting Started with Flight Tracker
- Next Consortium Meeting & Past Slides
- Newbie Session Agenda
- Edge for Scholars Blog
- Edge for Scholars at Vanderbilt
- X: @EdgeForScholars

Upcoming Deep Dives



February: Tricks of
Publication Wrangling

March: Maximizing Value on
a New Project



Troubleshooting Call



Monthly Troubleshooting Call – optional

Third Wednesday at 1pm Central Time
January 17, 2024

Driven by Your Questions & Problems

All are welcome!

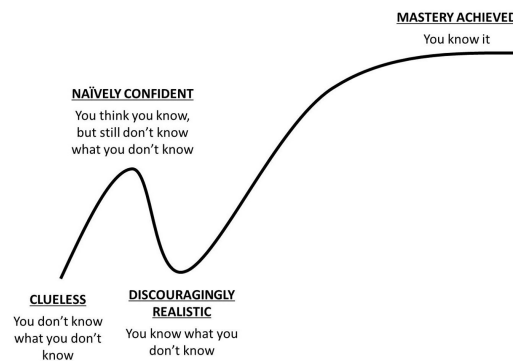
Ask to join our email list in the chat for an invitation...



Newbie Call



Just getting started with Flight Tracker?



There's a definite learning curve.
Move up more quickly by joining
January's "newbie" call.

Thursday, January 18, at 11am Central Time

(Tuesday, February 13, at 11am Central Time)

Leave your email in the chat to receive an invitation

Office Hours with Rebecca & Scott



www.edgeforscholars.org

[X @EdgeForScholars](https://twitter.com/EdgeForScholars)

https://redcap.link/flight_tracker

