

Flight Tracker Consortium Meeting

December 6, 2023



www.edgeforscholars.org

[X @EdgeForScholars](https://twitter.com/EdgeForScholars)

https://redcap.link/flight_tracker

Meeting Agenda



What's New?

Current Version:
v6.3.0

Search PubMed for a Scholar's Missing Institutions
Revising the Overnight Processing & Data Sharing
Bridge Awards

Deep Dive: Slicing & Dicing Data with Cohorts

What's Next?

Holiday Projects
January is National Mentoring Month

Office Hours with Rebecca & Scott



What's New?

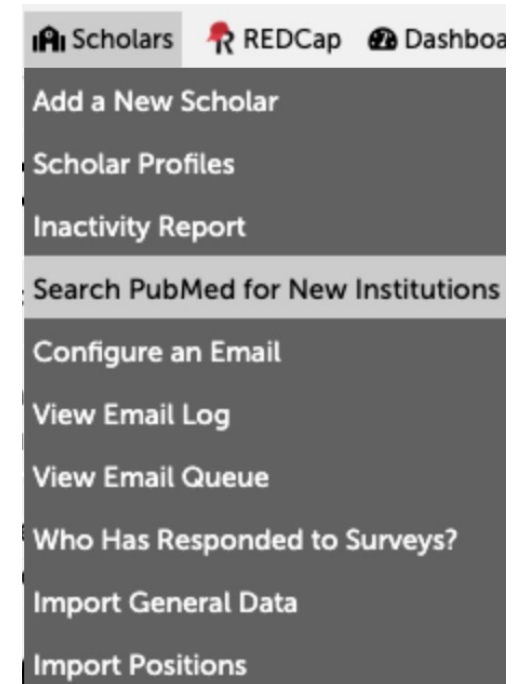
Institution Matching



- Flight Tracker matches its grants, patents, and publications by name and institution
- Advantage: Avoiding false positives
- Advantage: Tracking scholars longitudinally after they leave
- Disadvantage: Must keep up with scholars' careers
- Disadvantage: LinkedIn's API is too expensive to auto-pull data
- Question: **How can we keep track of institutions better?**

Looking on PubMed...

- Scholars menu → Search PubMed for New Institutions – **v6.1.0 and higher**
- Looks for institutions for your scholars' names that you don't have
- Can pick up bad naming matches – e.g., UCSF vs. University of California San Francisco
- Looks in PubMed publications for last X months
- Some false positives; you can research & decide
- If you're ok with it, creates the REDCap Position Change form for you



Looking on PubMed...



Live Demo

Looking for New Institutions on Publications After December 1, 2022

Scholar Name	Citation	Publication Date	Current Institutions	Matched Authors	Matched Institutions
Record 5: Robert E. Wood 1 new matches	Wood RE, Gardner T. Forensic odontology in DVI-A path forward. J Forensic Sci. 2023 November 06. PubMed	11-06-2023	<ul style="list-style-type: none"> Cincinnati Children's Hospital Medical Center Cincinnati Children' 	Wood RE	Is this the right institution? Ontario Forensic Pathology Service and Office of the Chief Coroner for Ontario, Toronto, Ontario, Canada. Shorten to institution name: Ontario Forensic Pathology Service and Office of the Chief Coroner for Ontario, Toronto, Ontario, Canada.
Show 2 Publications for Record 6: Robert W. Mahley. Last Confirmed Publication Date: 07-01-2016.					
Show 2 Publications for Record 81: David Poon. No Confirmed Publications.					
Show 2 Publications for Record 130: Joyce Ou. Last Confirmed Publication Date: 09-01-2015.					
Show 3 Publications for Record 132: Michael T. Wilson. No Confirmed Publications.					



Looking for Institutions

- Considering adding a similar scan for NIH RePORTER
- Not as high of a priority as PubMed because of less data



NIH > RePORT > RePORTER

Overnight Processing Updates



- Batched error alerts in case of multiple emails
- Quicker weekly data-sharing algorithm: 28 hours → 5 hours
- Quicker loading batch queue to monitor General menu → Batch Queue
- Unplanned: Triggered by high number of Vanderbilt scholars tracked – 5,953

Bridge Awards



- K99/R00 award type has been renamed “Bridge Award”
- Now includes F99/K00 awards too [**v6.3.0 & higher**]
- Predoc → Postdoc Transition Award
- Seen in Career-Defining Awards



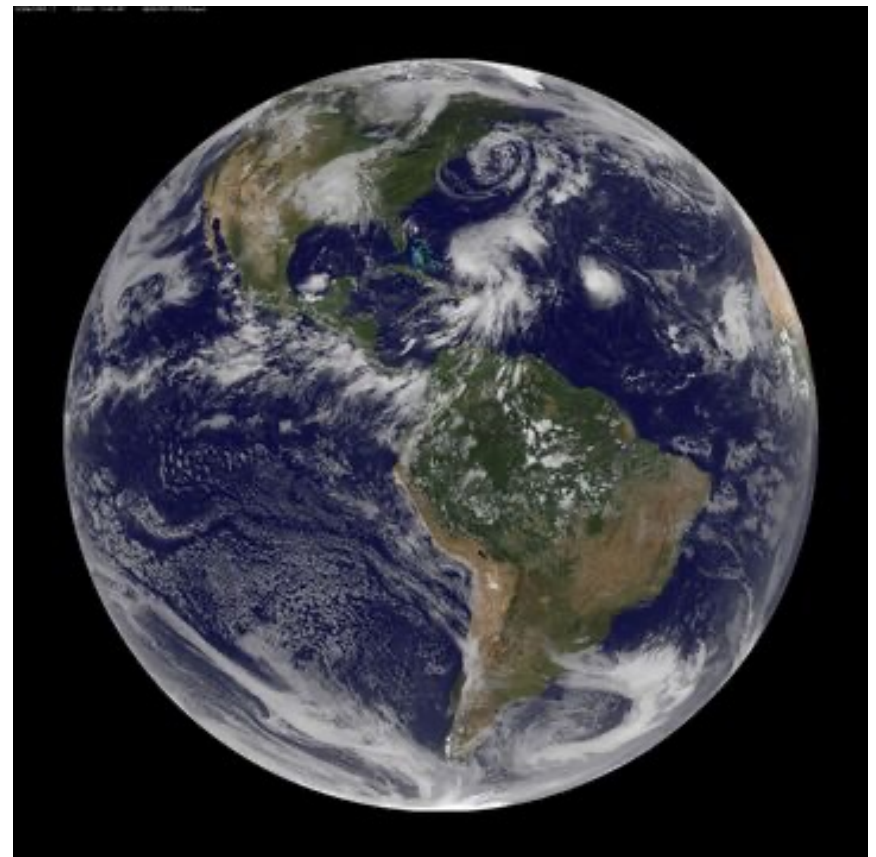
Deep Dive

Slicing & Dicing Data
with Cohorts

Overview



- What is a Cohort?
- Making a Cohort
 - Adding a Cohort
 - New-ish: Person Roles
 - Hand-Picking a Cohort
- Uses of Cohorts
 - Grants Metrics
 - Equity of Outcomes
 - Highlight Group Successes
 - Cohort Projects: Sharing



What is a Cohort?



- For Flight Tracker, Cohort = Sub-Group = Filter
- Definition: A group of scholars, smaller than the entire group, that displays certain characteristics
- “How is this segment of scholars being affected?”
- Cohorts/Filtering has its own Flight Tracker menu
- Any graph or metric in Flight Tracker has a way to restrict its analysis to a given cohort
- Does **not** apply to REDCap reports





Adding a Cohort

- Cohorts/Filtering menu → Add/Modify a Cohort
- Title your cohort to identify throughout Flight Tracker
- Add multiple filters and combine them with Boolean logic
 - XOR [“Exclusive Or” – one or the other but not both]
 - AND
 - OR

Add a Cohort

This page is complex. [Click here to show help.](#)

Title:

Precedence Rules: XOR > AND > OR

	Filter Type	Variable	Value
Filter 1	<input type="text" value="---SELECT---"/>		

Cohort Filter Types



- Demographic – most common & most extensive
- Grant – type, activity code, NIH institute, dates
- Publication – least helpful in my experience but available
- Resources – helpful to analyze things like workshops and pilot funding if you keep track of these



Demographic Categories



Taken from Summary & Identifiers Forms

- Gender
- Race/Ethnicity
- Primary Department
- Current Academic Division
- Date of Birth
- Academic Degrees
- Citizenship
- URM Status
- Disability Status
- Disadvantaged Status
- Start of Training Program
- End of Training Program
- Did Not Complete Program
- Recorded Tenure Status
- Current Academic Rank
- Person Role [*see later slide]
- Employment Status
- Email Domain

Grant Categories



- Award Type [Any]
Flight Tracker Types: [Internal K, K12/KL2, Individual K, K Equivalent, R01, R01 Equivalent, ...]
- K→R Conversion Status
- First Award Type
Flight Tracker Types
- First Award Sponsor Number
- Any Award Sponsor Number
- Activity Code [Any]
- Institute/Center Abbreviation [Any]
- Start of First Training Grant
- End of Last Training Grant
- First Any K Date
- Last Any K Date
- First R01 or Equivalent Date

Publication Categories

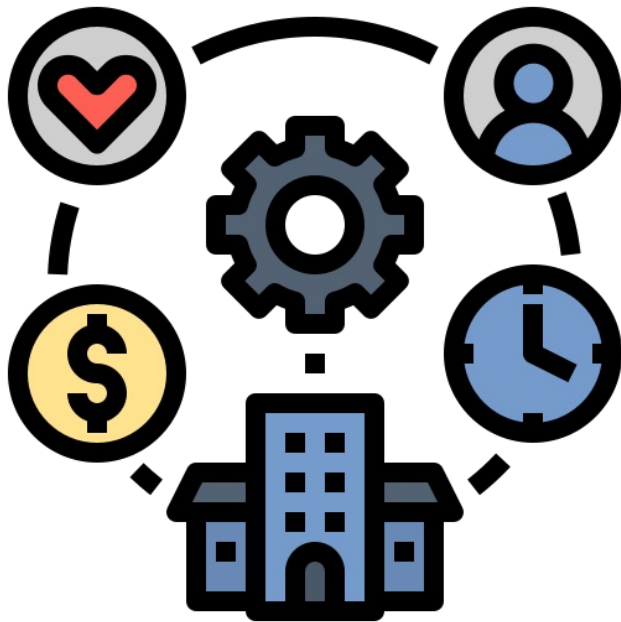


If a scholar has 1+ wrangled publications with the trait, then they're included in the cohort:

- Publication Category
- Number of Research Articles [iCite specifies as “Original Research” articles]
- Number of Research Articles from Date
- Scholars with Relative Citation Ratio
- Scholars with Publication Type
- Scholars with MeSH Term



Resource Categories

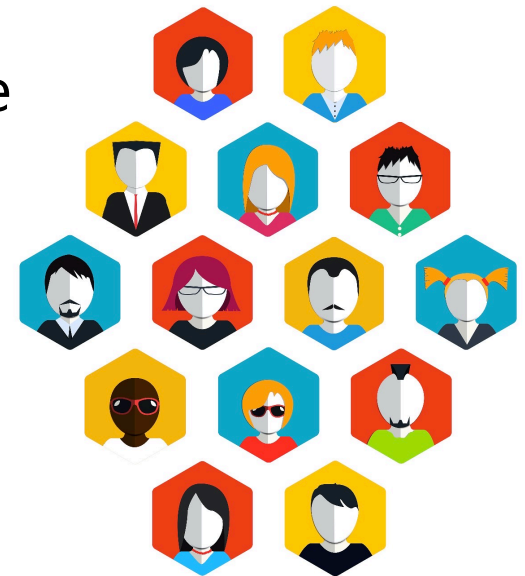


- [Choose from a list of resources]
- Include attendees of a workshop or users of a resource in the cohort
- Keep track of them manually via Resources menu
- Use to analyze effectiveness [Return on Investment]



Person Roles

- A new-ish feature in Flight Tracker; deliberately vague name
- Configured in the General menu → Configure Application page
- **When configured, adds a dropdown field to the Identifiers form**
- Choices on dropdown are whatever you configure
- List is made with one entry per line
- **→ Can be used to create a cohort**
- For example:
 - Faculty, Staff, Student
 - Class of 2020, Class of 2021, Class of 2022, ...





Mix & Match to Customize!

- Boolean logic connects: XOR, AND, OR
- Processed in order of XOR first, then AND, then OR

	Filter Type	Variable		Value	
Filter 1	Demographic	Academic Degrees	Has	MD only	Add Row
			AND		
Filter 2	Grant	Conversion Status	Has	Still on K; No R01-or-Equ	Add Row
			OR		
Filter 3	Demographic	Academic Degrees	Has	MD + PhD	Add Row
			AND		
Filter 4	Grant	Conversion Status	Has	Still on K; No R01-or-Equ	Add Row
			OR		
Filter 5	Demographic	Academic Degrees	Has	MD + other	Add Row
			AND		
Filter 6	Grant	Conversion Status	Has	Still on K; No R01-or-Equ	Add Row
			OR		
Filter 7	Demographic	Academic Degrees	Does Not Have	PhD	Add Row

Hand-Picking a Cohort

- Normally, cohorts are automatically and dynamically managed
- Sometimes, you just want to hand-pick a group of people
- Hand-Pick a Cohort page
- Alphabetized list of names with checkboxes



Hand-Pick a Cohort

Cohort Name:

- 1: [Khaled A Abdel-Kader](#)
- 2: [Ty W Abel](#)
- 3: [Robert L Abraham](#)
- 365: [Aaron W Aday](#)
- 513: [Fatemeh Adelnia](#)
- 456: [Rajiv Agarwal](#)
- 493: [Vineet Agrawal](#)
- 335: [Aimalohi A Ahonkhai](#)
- 480: [Kimberly Albert](#)
- 4: [Melinda C Aldrich](#)
- 452: [Matthew R Alexander](#)
- 443: [Ryan Allen](#)
- 5: [Peggi M Angel](#)
- 427: [James W Antoon](#)
- 476: [Derek Archer](#)
- 6: [Amy C Arnold](#)
- 7: [Donald H Arnold](#)
- 8: [Shanna A Arnold](#)
- 539: [Juan Pablo Arroyo Ornelas](#)
- 9: [Carolyn M Audet](#)



Viewing Cohorts

- View Existing Cohorts page
- For each cohort:
 - See membership count
 - Show names
 - Export names
 - Export demographics
 - Make into a REDCap Project [*see later slide about Cohort Projects]

Cohort: Last CDA >= 2015

Combiner	Type	Variable	Choice	Comparison	Value
	Grant	Last Any K		>=	2015-01-01

Size of Cohort Last CDA >= 2015: 269 Scholars

Show Names Export Names Export Demographics Make into REDCap Project

Cohort: Last CDA >= 2018

Combiner	Type	Variable	Choice	Comparison	Value
	Grant	Last Any K		>=	2018-01-01

Size of Cohort Last CDA >= 2018: 203 Scholars

Show Names Export Names Export Demographics Make into REDCap Project

Grant Metrics

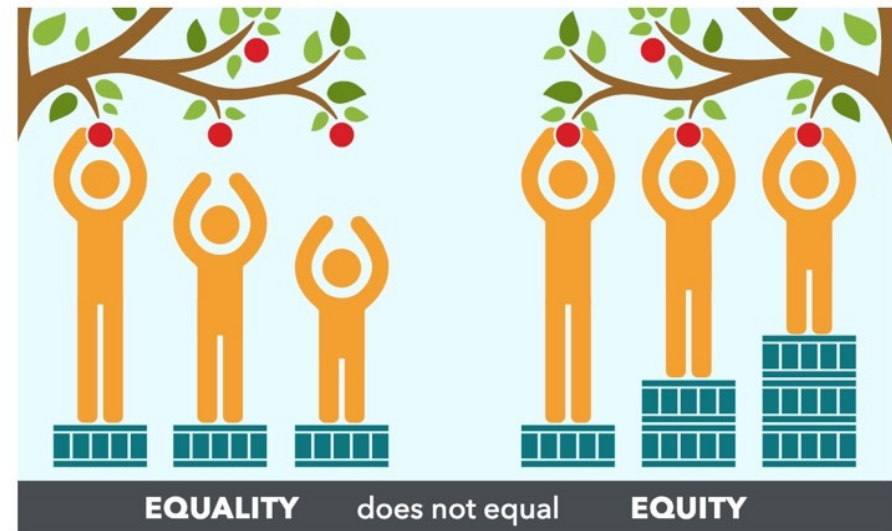


- We keep internal funding in Custom Grants
- We name each grant's number by the mechanism
 - Multiple mechanisms
 - For example: VFRS, VCTRS
- Shared in one large Flight Tracker pool
- Each grant mechanism forms a cohort:
Sponsor award number
- Can quickly pull up metrics to advertise grant
 - $K \rightarrow R$ conversion rate
 - Number of scholars over time



Equity of Outcomes

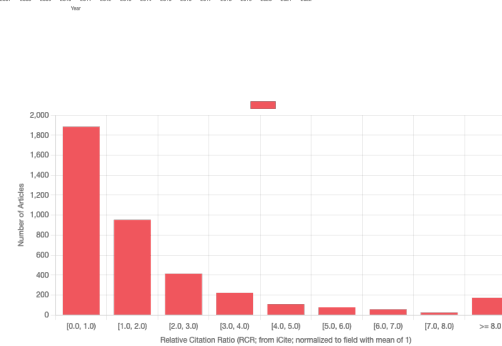
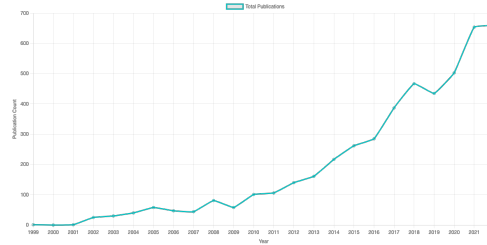
- Diversity, Equity & Inclusion strategies are hot topics in higher education these days
- How can you tell if historically underprivileged groups are achieving equal outcomes?
- Form cohorts & compare
- Can monitor data over time to see if your interventions are achieving a more equitable playing field
- View menu → Demographics Table helps alongside Dashboards menu



Highlight Group Successes



- Hand-pick a cohort or pick a cohort by trait
- Share data that show group achievement
- Emphasize individual contributions to entire group → motivation
- For example:
 - Co-authorship network
 - Bar graph of impact factors
 - Word cloud of publications
 - Number of publications by year



Cohort Projects: Sharing



- Create a **read-only copy project** of a cohort's information
 - Updated weekly
 - Cohort project's data are overwritten weekly
- Centralizes data wrangling to central project
 - Alleviates need for all to learn to maintain Flight Tracker
- Read-only project can only see their cohort's data
 - Prevents snooping on others & potential rivalries



Cohort Projects: Pragmatics



- **Use cases:**

- Divisions in Department of Medicine [Pulmonary, Cardiology, Heme/Onc, etc.]
- Sub-Grants under one large grant [U01 award]

- **Limitation:** Must get a REDCap Supertoken to create projects

- 64 characters – not API token [32 characters]
- REDCap teams are often hesitant to provide because of security risk
 - **Mitigation:** Get them to do it for you; then remove the supertoken
- I can help make your case, but it's the local team's decision



Cohort Projects: Steps to Create



1. Enter the Supertoken into Configure Application page
2. Go to Cohorts menu → View Existing Cohorts
3. Under the cohort, click Make into REDCap Project
4. It'll create the REDCap project for you
5. It'll automatically update each week overnight

Cohort: Last CDA >= 2015

Combiner	Type	Variable	Choice	Comparison	Value
	Grant	Last Any K		>=	2015-01-01

Size of Cohort Last CDA >= 2015: 269 Scholars

Show Names Export Names Export Demographics **Make into REDCap Project**

A thick red arrow points from the right side of the image towards the "Make into REDCap Project" button.

Summary



- What is a Cohort?
- Making a Cohort
 - Adding a Cohort
 - Person Roles
 - Hand-Picking a Cohort
- Uses of Cohorts
 - Grants Metrics
 - Equity of Outcomes
 - Highlight Group Successes
 - Cohort Projects: Sharing



Next Month: Crowdsourcing Implementation



- U Texas-Southwestern is just starting with Flight Tracker and wants to use it institution-wide
- They sought implementation advice from our team, but I thought this topic would be a great, broader conversation for a Deep Dive
- They will bring questions next month, but I want **everyone** to be engaged in this conversation!



Upcoming Deep Dives



January: Crowdsourcing Implementation

February: Tricks of Publication Wrangling

March: Maximizing Value on a New Project





What's Next?

Holiday Projects



This month, I got pulled into projects and did not complete what I wanted to. But the holidays are coming, and that means more time for focused work!

- Relating Grants with Publications
- Honors & Awards Survey
- Streamlined Mentee-Mentor Agreements
- Piloting an MSTP-specific version of Flight Tracker at Vanderbilt
 - Custom Individual Development Plans
 - Custom Mentee-Mentor Agreements
 - Will form a committee to refine before launch – let me know if someone at your place is interested



National Mentoring Month



- Coming: **January** is National Mentoring Month
- On January's call, we plan to highlight how to advance mentoring with Flight Tracker
- You might want to consider activities with your group:
 - January 9 – **I am a Mentor Day**
 - January 15 – **MLK Day of Service**
 - January 17 – **International Mentoring Day**
 - January 21 – **Thank Your Mentor Day**



<https://www.mentoring.org/campaigns/national-mentoring-month/>

X: Follow [@EdgeForScholars](#) for mentoring content

Flight Tracker Community



Support Forum

"Better than Email" - Ask me for an Account in the Chat

<https://redcap.vanderbilt.edu/flightracker/>

A screenshot of the Flight Tracker Community forum interface. The top navigation bar includes the Flight Tracker logo, a search bar, a "+ Create post" button, and a "Spaces" dropdown menu. The user "scott.pearson" is logged in. Below the navigation bar, a welcome message reads "Welcome to Flight Tracker Community!". The main content area is titled "All Posts in Flight Tracker Community" and lists several posts. Each post includes the user's name, the time since the post was made, the topic, and the number of comments and likes. The posts are: 1. "Using FT for New T32 Applications" by jessica.chiovitte, 1 day ago, 5 comments, 0 likes. 2. "Identical name at same institution" by scott.pearson, 1 week ago, 1 comment, 0 likes. 3. "Honors & Awards Survey" by scott.pearson, 1 week ago, 0 comments, 0 likes. 4. "email not sent, make sure 'Enable module on all projects by default' is NOT checked." by kia.huffman, 1 week ago, 1 comment, 0 likes. 5. "Publication results limited by the 'Institutions Searched For'" by scott.pearson, 1 week ago, 3 comments, 0 likes. On the right side of the forum, there is a sidebar with the "efs" logo and a list of links: Home, Flight Tracker Video Vault, Mentee-Mentor Agreements, Getting Started with Flight Tracker, Next Consortium Meeting & Past Slides, Newbie Session Agenda, Edge for Scholars Blog, Edge for Scholars at Vanderbilt, and X: @EdgeForScholars.

Troubleshooting Call



Monthly Troubleshooting Call – optional

Third Wednesday at 1pm Central Time
December 20, 2023

Driven by Your Questions & Problems
All are welcome!

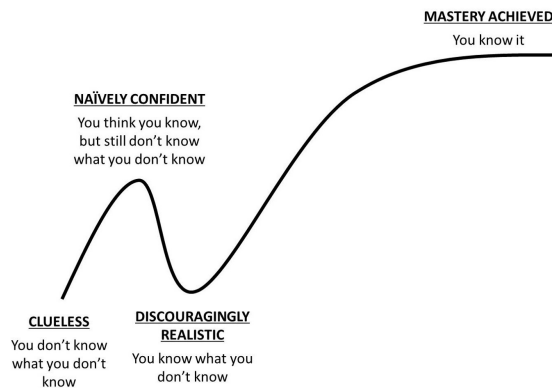
Ask to join our email list in the chat for an invitation...



Newbie Call



Just getting started with Flight Tracker?



There's a definite learning curve.
Move up more quickly by joining
December's "newbie" call.

Tuesday, December 12, at noon Central Time
(Thursday, January 18, at 11am Central Time)

Leave your email in the chat to receive an invitation

Office Hours with Rebecca & Scott



Office hours



www.edgeforscholars.org

[X @EdgeForScholars](https://twitter.com/EdgeForScholars)

https://redcap.link/flight_tracker