

# Flight Tracker Consortium Meeting

September 7, 2022

[www.edgeforscholars.org](http://www.edgeforscholars.org)

 @EdgeForScholars

[https://redcap.link/flight\\_tracker](https://redcap.link/flight_tracker)  
(new design)



# Meeting Agenda



## **What's New?**

Uploading Tables 5 & 8 from a Prior Submission  
New Flight Tracker Website

**Deep Dive:** Quickly Profiling a Team

## **What's Next?**

Fall Semester: Mentee-Mentor Agreements

**Office Hours with Rebecca & Scott**



# What's New?

# Uploading Tables 5 & 8



- Under **General Menu** → **NIH Tables 5, 6, & 8**

A screenshot of the Flight Tracker Epi PhD web interface. The top left corner features the "FLIGHT TRACKER for scholars" logo. The top right corner displays "Flight Tracker Epi PhD". A horizontal navigation bar below the logo contains icons and labels for: Home, General, Grants, Pubs, View, Wrangle, Scholars, REDCap, Dashboards, Cohorts / Filters, Mentors, Resources, and Help. The main content area has a light gray geometric pattern background and displays the heading "NIH Tables" in large black font. Below the heading is a dropdown menu labeled "Cohort:" with the selection "---ALL---" and a downward arrow. A dark gray horizontal bar spans the width of the page with the text "Set Up Flight Tracker" in white. At the bottom, a blue arrow points from the left edge to the text "Upload Prior Years' Data for Tables 5 &amp; 8", which is underlined.

# Uploading Tables 5 & 8



- **Process:**
  - Upload CSV → Adjudicate → Send to REDCap
- Table 5 slower than Table 8 (because Table 5 downloads the publications from PubMed)
- CSVs can be copied/pasted from MS Word into Excel
- Publication list will have multiple lines

### Upload Prior Years to Flight Tracker: Tables 5 & 8

Convert prior years' data into Flight Tracker. Warning: Automatically looking up the publications for Table 5 can take some time.

**Status**

Upload File → Adjudicate → Upload to REDCap

Remaining Work: 0 issues  
REDCap Rows Ready to Upload: 0  
(Uploads complete only at end of adjudication.)

Upload a CSV Below to Begin

#### Start a New Upload

Table:

Date When These Tables Were Submitted:

What is the Award Number for this Grant?

File with Table as CSV (Comma-Separated Values):  No file chosen

**Upload Tables 5 & 8**



[Live Demo](#)

# New Website (Redesigned)



[https://redcap.link/flight\\_tracker](https://redcap.link/flight_tracker)

- Still has the same links and info as the prior website, but reorganized
- Will be more accessible for search engines
- Great place to send people to in order to learn more about Flight Tracker

A screenshot of the Flight Tracker website homepage. The top navigation bar includes the "efs" logo and links for "I AM A...", "WRITING TOOLS", "EFFICIENCY TOOLS", "EDGE FUNDING", "EDGE EVENTS", and "EDGE OFFICE". The main content area features a blue header with "Efficiency Tools" and "Flight Tracker" in white text. Below this is a sub-header "Automated tracking & analysis of career outcomes". The main text describes the software, developed at Vanderbilt, used by 38 CTSA institutions, and lists features like dashboards, metrics, and success curves. A "MENTOR NOTES" box on the right asks if the user has a pool of scholars and provides contact information for Scott Pearson. The Flight Tracker logo is also present in the bottom right of the screenshot.

**efs**  
EDGE SCHOLARS

I AM A... WRITING TOOLS EFFICIENCY TOOLS EDGE FUNDING EDGE EVENTS EDGE OFFICE

Efficiency Tools  
**Flight Tracker**

**Automated tracking & analysis of career outcomes**

**Flight Tracker software, developed at Vanderbilt and used by 38 CTSA institutions, automates tracking and analysis of career outcomes, including publications, funding, training activities, and other milestones.**

Graduate programs, training grants, and departments use Flight Tracker to keep up with their scholars' success.

Flight Tracker offers dashboards, metrics, and visuals such as an up-to-the-moment K-to-R conversion calculator, success curves, and social network graphs.

Time spent gathering information and producing NIH training tables is reduced. Customizable online surveys simplify collection of demographic data.

Flight Tracker is free and available to any institution with REDCap. The consortium meeting provides monthly calls and video archives to get new users up to speed.

**MENTOR NOTES**

Do you have a pool of scholars at Vanderbilt or Meharry (training grants, degree programs, departments, or others) that you would like to track?

Email **Scott Pearson** to inquire or to request a REDCap project be created for your group.

**FLIGHT TRACKER**  
for scholars



# Deep Dive

Quickly Profiling a Team



# Flight Tracker's Strengths



Ongoing/continual tracking of a population of scholars (main use)

—OR—

Quickly gather information about a group of scholars' collaborations



# Group Profiles



- At Vanderbilt, requests to profile groups, e.g.,
  - A consortium of scholars
  - A department/center
  - Faculty for a training grant
  - Showing need for an administrative position
  - Retreat for early career scholars
- Able to produce graphics and statistics
  - Within 1 week
  - With 4-8 dedicated hours



# Process



1. Set up Flight Tracker; upload names and institutions
2. Set to “Update All” tonight on Home page
3. Next day, wrangle publications
4. Produce graphics and statistics
5. Compile in MS Word document
6. Email correspondence back to group

[Click to Run All Updates Tonight](#)  
(Otherwise, updates will run over the course of the week.)



# Contents

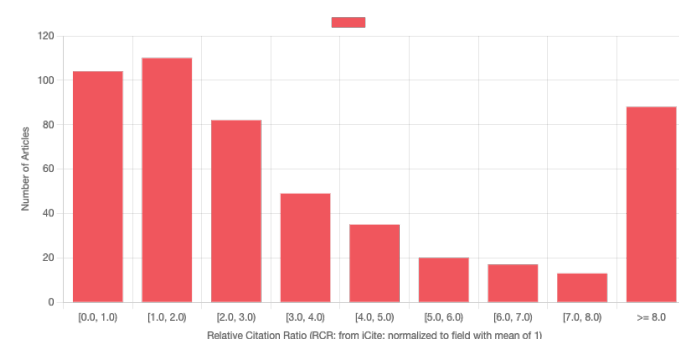
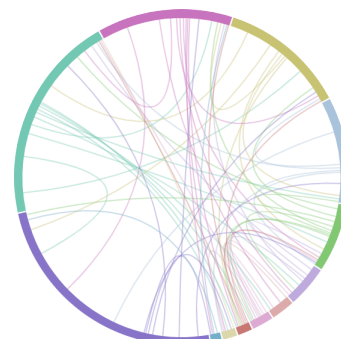
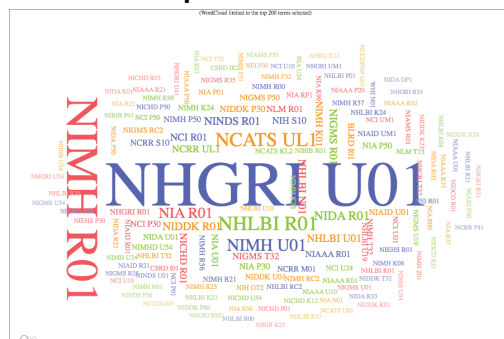


- Social Network Graph of publishing collaborations
- Word Clouds (as many as possible)
- Impact charts
- Sometimes, highlight individual papers (from Publication Impact Measures)

# Multi-Site Consortium



- Must input each scholar's institutional affiliations correctly
- Group has come back three times for different groups of people
- Main group, diversity initiative
- **Interests:**
  - Numbers of collaborations among scholars
  - Impact factors like Relative Citation Ratio and Altmetric scores



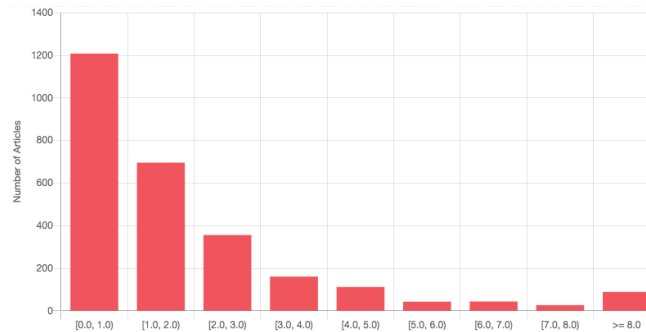




# Administrative Position



- Request to institution to fund administrative position
- Need to demonstrate enough collaborative activity among a proposed group
- **Focus:** Volume of collaborations with high impact





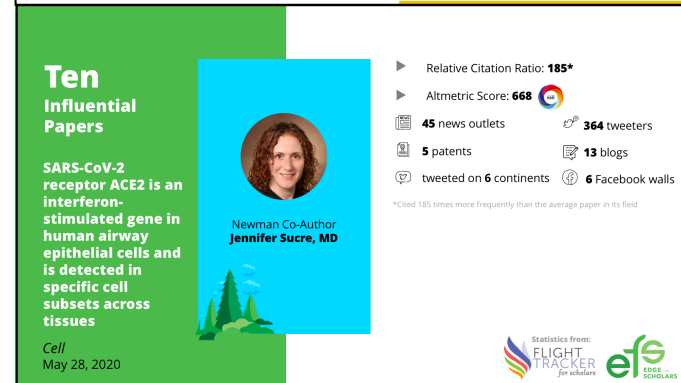
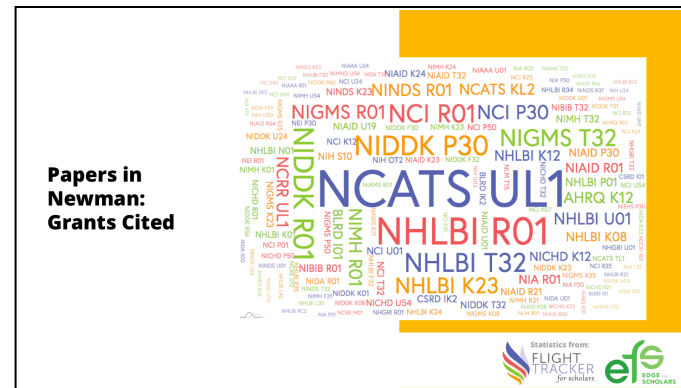
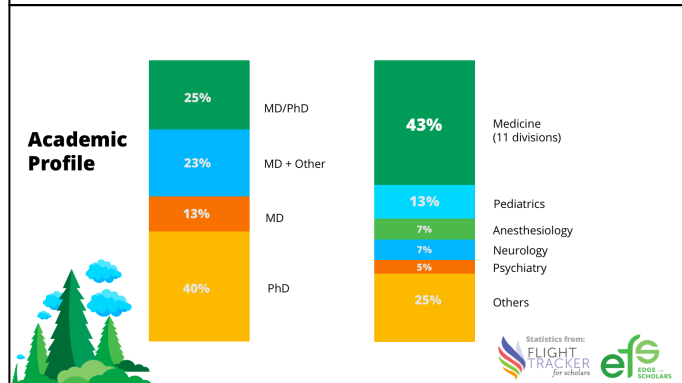
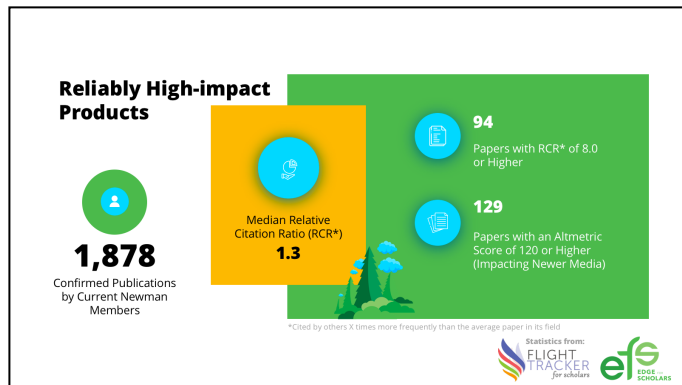
# Retreat for Early Career Scholars



- Publication metrics highlighting successes
- Highlighted 10 impactful papers (from Publication Impact Measures)
- Word clouds and social network graphs
- Demographic breakdown
- Institutional K→R conversion rate
- Used **graphic designer** to fit with retreat theme



# Retreat Slides



## Lessons Learned

- Publications are key data type
- Collaborations are key metric
- Main obstacle is publication wrangling
- A little image editing goes a long way
- **Time requirements:**
  - A few days for computer to process (within one week)
  - Only a few hours of work required



# Lessons Learned (Continued)



- Benefit of using someone with prior expertise in Flight Tracker (hard to train up someone for one-time use)
- Getting institution names right the first time is biggest time-saver (format same as PubMed/RePORTER)



- Can “retire” project after data request completed (to save resources)
- Helpful way to build cross-campus relationships

## Takeaway



Next time you hear of a need to highlight **collaborations** on your campus, think of how Flight Tracker might enhance those efforts.



## Poll: Next Deep Dive Topic



What's the next Flight Tracker topic that you'd like to hear about?



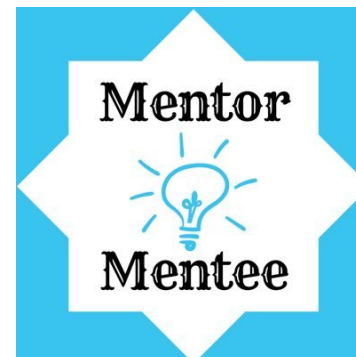


# What's Next?

# Mentee-Mentor Agreements



- Now is the yearly time to implement...
- A nice, timely addition to new trainees and early career scholars
- A simple enhancement to any training program
- Define mentee-mentor relationships while heading off issues
- A part of Flight Tracker (under Mentors menu)
- Free, publicly available version:  
[https://redcap.link/ft\\_mma](https://redcap.link/ft_mma)





# Mentee-Mentor Agreements



Coming soon (this month?), enhancements to fulfill requirements for **Individual Development Plans (IDPs)**



# Appreciating Postdocs



## National Postdoc Appreciation Week

13<sup>th</sup> Annual Celebration

**September 19-23, 2022**

Virtual and In-Person Events

[www.nationalpostdoc.org/page/2022npaw](http://www.nationalpostdoc.org/page/2022npaw)



— NATIONAL —  
**POSTDOCTORAL**  
— ASSOCIATION —

# Troubleshooting Call



## Monthly Troubleshooting Call (optional)

Third Wednesday at 1pm Central Time  
September 21, 2022

*Driven by Your Questions & Problems*

All are welcome!

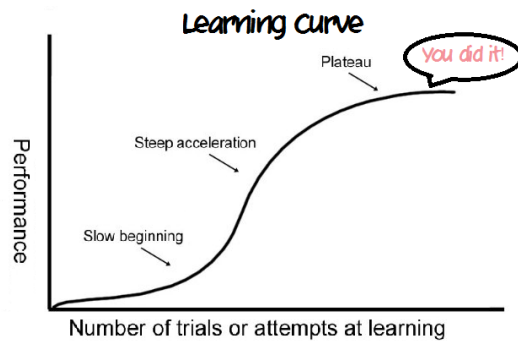
Ask to join our email list for an invitation...



# Newbie Call



## Just getting started with Flight Tracker?



There's a definite learning curve. Move up more quickly by joining **September's "newbie" call.**

**Tuesday, September 13 at 12pm Central Time**

Leave your email in the chat to receive an invitation

# Office Hours with Rebecca & Scott

