

Flight Tracker Consortium Meeting

April 6, 2022



www.edgeforscholars.org



Meeting Agenda



What's New?

API Changes

Feature Switches

Centralized Resource Reporting

Flight Tracker Pins

Deep Dive: Resources

What's Next?

Upgrade Minimum REDCap Version?

NIH Training Tables 2-4

Office Hours with ~~Rebecca~~ & Scott



What's New?

API Changes



Federal RePORTER

Federal RePORTER is no longer available

Effective March 1st, 2022, the Federal RePORTER system has been retired and is no longer available. For federal spending information, please visit [USAspending](#). To view the archived content [click here](#).



Turned **off** in Flight Tracker version 3.6.0

API Changes

- USASpending.gov does not list PIs. 😞
- **NIH RePORTER** still active, including the following federal agencies: NIH, CDC, AHRQ, HRSA, VA, and the Administration for Children & Family.
- Biggest loss: NSF grants...
- ...but the NSF has its own API! Will hook up in next few months.



API Changes: Potential Impact



- **Error messages** may appear in the automated emails. They will mention the Federal RePORTER.
- Logs may become **full**.
- Server may become temporarily **slow** and bogged down.
- Impacts should diminish after upgrading to **4.6.0 or later**.
- Concerned about “weirdness?” Please explain your situation to me at scott.j.pearson@vumc.org. I can do some “magic” for you.



Feature Switches



Features

Saving a new configuration may reset any custom fields that you have added to your Data Dictionary. It will also stop data collection for affected data. **Please proceed with care when making changes.**

Update Frequency (weekly)

Weekly Monthly Quarterly Request

Days per Week to Build Summaries (1)

1 3 Days 5 Days

Mentee-Mentor (On) Off

Patents (On) Off

Publications (On) Off

Grants (On) Off

Save Settings

- Turns off unnecessary features.
- Spreads out crons over a longer time period.
- Aimed for high-volume servers.
- Version 4.5.0 and higher.

Centralized Resource Reporting



- Keeps track of resource use for all your server's Flight Trackers
- Same process, only for multiple projects; combines all resources
- A bit slower than for just one project
- **Resources → Participation Roster for All Projects**

Date: 04/04/2022

Choose a resource from all potential resources. Only projects with that resource will store participation.

Community Engage Studio

Attendance Roster

(One per line.)

Sign in First and Last Names	Names Matched with Database	Already Signed In
Eric Austin Peggi Angel Carolyn Audet	Multiple Matches: Eric Austin (Newman Society) Eric Austin (MSCI) Peggi Angel (Newman Society) Multiple Matches: Carolyn Audet (Newman Society) Carolyn Audet (Velez Edwards OB/GYN Appointment) Carolyn Audet (CQIR)	

Flight Tracker Lapel Pins



- Casualty of the Pandemic
- We still have **77** of them!
- Meant to start local conversations (talk trigger) about support for training grants
- If you're interested, please put in the chat:
 1. Your mailing address
 2. How many you'd like





Deep Dive

Resources Defined



- Educational activities to help scholars' success
- Examples:
 - Reviews on grant proposals
 - Pilot funding (yes/no)
 - Project management courses
 - Library of successful grant proposals in past



Resource Conundrum



- CTSAs' missions are to provide resources to ensure scholar success
- Many programs (\$\$\$), but **do they work? How do we know?**

One of Flight Tracker's main aims



Statistical Framework



- “Treatment” (used resource) & control groups (did not use resource)



- Measurable outcomes:
 - $K \rightarrow R$ conversion ratio (yes/no)
 - Time to conversion
 - Publication quality (average RCR)
 - Publication quantity

Data for You to Track



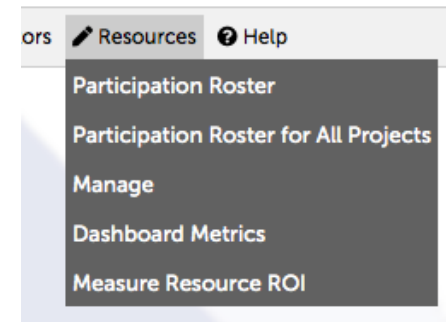
- Already have: Publication and grant data (outcomes)
- Need: Resource use over time (used yes/no and when)



Flight Tracker Tools



- Easy way to collect data & transform into REDCap
- Easy way to add additional resources
- Analytical metrics (“Resource ROI”)



Date:

Choose a resource from all potential resources. Only projects with that resource will store participation.

Attendance Roster

(One per line.)

Sign in First and Last Names	Names Matched with Database	Already Signed In
Eric Austin Peggi Angel Carolyn Audet	Multiple Matches: Eric Austin (Newman Society) Eric Austin (MSCI) Peggi Angel (Newman Society) Multiple Matches: Carolyn Audet (Newman Society) Carolyn Audet (Velez Edwards OB/GYN Appointment) Carolyn Audet (CQIR)	

Outcome Data



Measure ROI page
Comparison of Means

Results for Edge Reviews		
Result	Did <u>Not</u> Use Resource	Used Resource
Effect of Edge Reviews on Conversion Ratio		
Mean (μ) for Conversion Ratio	$\mu = 66.1\%$	$\mu = 76.9\%$
Cases (n) for Conversion Ratio	n = 201	n = 207
Number Successful	80	90
Number Not Successful	121	117
Odds Ratio	OR = 1.16	
Interpretation	Those using the resource are 1.16 times more likely to have a good outcome.	
Effect of Edge Reviews on Years to Convert		
Mean (μ) for Years to Convert	$\mu = 5.2$	$\mu = 4.8$
Size (n) for Years to Convert	n = 80	n = 90
Standard Deviation (σ) for Years to Convert	$\sigma = 2.6$	$\sigma = 2.2$
Probability (p) of H_0	p = 0.373 t = 0.892 df = 168	
95% Confidence Interval (CI)	CI = [4.43, 5.35]	
Interpretation	There is not a statistically significant difference in outcomes between those who used the resource and those who did not. Perhaps having a larger sample-size (n) - i.e., more power - would provide more insight. (p > 0.05)	

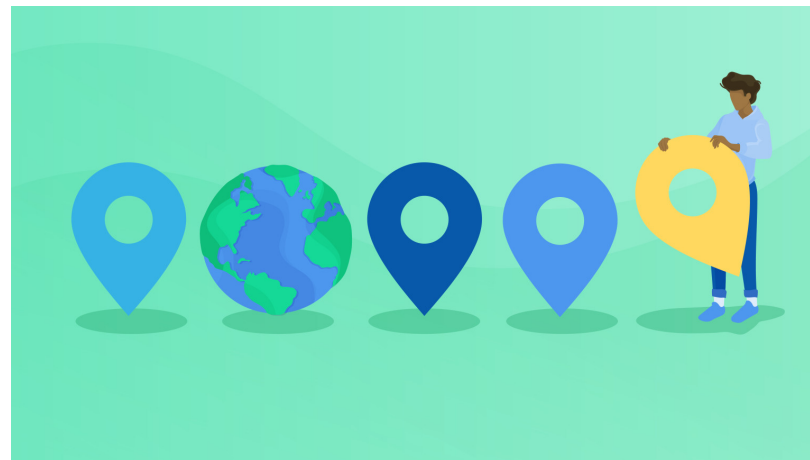
Statistics Refresher

- Odds Ratio (OR) – How associated an exposure is with an outcome.
- P-value: Fraction that this outcome will occur by chance alone (usual thresholds for “significance” are 0.05 or 0.10).

Impact Potential



- Goal: Wiser investment of funding
- Locally, answers question, “Does it work?”
- Nationally, identify best practices through de-identified data aggregation





What's Next?

Minimum REDCap Version



Request: Please check your REDCap version (at the footer) and paste it in the chat if it is before 11.1.5.

Example footer:

REDCap 12.2.8 - © 2022 Vanderbilt University

External Module Framework Version	First REDCap Release
Version 9	12.0.8
Version 8	11.1.5
Version 7	10.8.2
Version 6	10.4.1
Version 5 (current)	9.10.0
Version 4	9.7.8
Version 3 (original)	9.1.3



NIH Training Tables 2-4



The screenshot shows the Flight Tracker Epi PhD web application interface. At the top left is the logo, and at the top right is the text "Flight Tracker Epi PhD". Below the logo is a navigation menu with icons and labels for Home, General, Grants, Pubs, View, Wrangle, Scholars, REDCap, Dashboards, Cohorts / Filters, Mentors, Resources, and Help. The main content area has a light gray geometric pattern background. The title "NIH Training Tables 2-4" is centered at the top of the form. A large red diagonal watermark "Sneak Preview" is overlaid across the form. There are three main sections: 1. "What Project Do You Want To Use?" with a "Load Project" dropdown menu (showing "---NEW---") and a "New Name:" text input field. 2. "What Date Will These Tables be Submitted?" with a date input field showing "mm/dd/yyyy" and a calendar icon. 3. "What Faculty are on Your Grant?" with a text area for listing names, with the instruction "(One name per line please.)" above it. At the bottom left, there is copyright information: "Copyright © 2022 Vanderbilt University Medical Center from Edge for Scholars Powered by REDCap". At the bottom right, there is a logo for "funded by CTSA Clinical & Translational Science Awards Program".

- The more info exists in all Flight Trackers, the more useful this tool will be.
- Integrates with NIH RePORTER for Table 3.
- Email verification system.
- Exports to MS Excel.

Miscellaneous On Deck



- Public Access Compliance: Emails & requests
- ORCID API – with Brian Christian of CWRU
- Biostatistical findings
- Celebrate your scholars with Email Highlights
- API to NSF Grants



Troubleshooting Call



Monthly Troubleshooting Call (optional)

Third Wednesday at 1pm Central Time
April 20, 2022

Driven by your Questions & Problems

All are welcome!

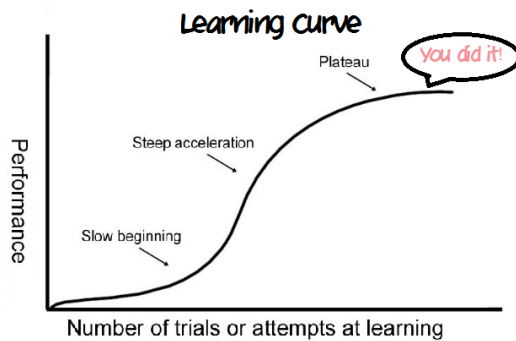
Ask to join our email list for an invitation...



Newbie Call



Just getting started with Flight Tracker?



There's a definite learning curve.
Move up more quickly by joining
April's "newbie" call.

Tuesday, April 12 at 10am Central Time

Leave your email in the chat to receive an invitation

Office Hours with ~~Rebecca &~~ Scott

